



PACIFIC ISLANDS
FAMILIES STUDY

AUT
UNIVERSITY

Acculturation: What does it mean for Pacific Health

El-Shadan Tautolo
elshadan.tautolo@aut.ac.nz



Overall Aims of Study

- To determine optimum pathways for children and families during critical developmental periods.
- To make empirically based recommendations to promote the wellbeing of Pacific children and families

What is the PIF ?

- Cohort of 1398 Pacific Babies born at Middlemore hospital in 2000.



6 weeks
1398



1 Year
1224



2 Year
1144



4 Year
1048



6 Year
1015

When was Information gathered?



Mother

Child

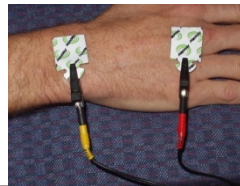
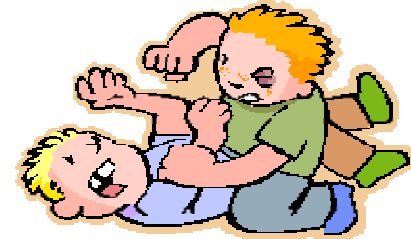
Father

Teacher

6 week	■	■		
1 year	■	■	■	
2 year	■	■	■	
4 year	■	■		
6 year	■	■	■	■
9 year	■	■		■
11 year	■	■	■	■

PIF Core Focus

- **Demographics**
- **Child Development**
- **Parenting and home environment**
- **School environment & Community environment**
- **Peer relationships**
- **Child and family health**
- **Family Finances**
- **Cultural Aspects**
- **Child behaviour**
- **Partner Relationships**





PACIFIC ISLANDS
FAMILIES STUDY

AUT
UNIVERSITY

Acculturation: What does it mean for Pacific Health

El-Shadan Tautolo
elshadan.tautolo@aut.ac.nz



Brief Overview

- Definitions and theory regarding acculturation
- Examine the measurement tool
- Associations between acculturation and risk factors

Acculturation - definition

- Acculturation is “modification of the culture of a group or individual as a result of contact with a different culture”
- Attitudes, behaviours, values, beliefs are modified through contact
- Acculturation Theory – Bi-directional (Berry et al. 2003)

Acculturation Groups

Cultural Type	Description
Assimilator	More aligned to dominant culture
Marginal	Aligned to neither culture
Integrator	Aligned to both cultures
Separator	More aligned to traditional culture


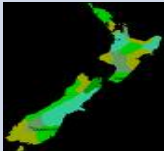





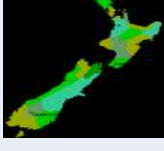
Acculturation Tool

- Adaption of GEQ screen (Tsai et al. 2000)
- Bi-dimensional = NZ & Pacific scale
- Piloted with Pacific advisory group and focus groups
- Good psychometric properties - robust

Acculturation Tool

	QUESTIONS
1	I was brought up in the New Zealand/Pacific way.
2	I am familiar with New Zealand/Pacific practices and customs.
3	I can understand English/a Pacific language.
4	I have several non-Pacific/Pacific friends.
5	Most of my friends speak English/a Pacific language.
6	I participate in New Zealand/Pacific sports and recreation.
7	I speak English / Pacific language.
8	I have contact with non-Pacific/Pacific families and relatives.
9	I visit Western-trained medical doctors / a traditional Pacific healer when I have an illness.
10	I go to a church that is mostly attended by non-Pacific/Pacific people.
11	I eat non-Pacific/Pacific foods.

Acculturation Groups

Cultural Type	Description			
Assimilator	↓		↑	
Marginal	↓		↓	
Integrator	↑		↑	
Separator	↑		↓	

Maternal & Infant Risk factors

Maternal	Infant
Unplanned Pregnancy	Small for Gestational Age
Single Parent	Hospital Admission
Perpetration of IPV	Not immunised
Depression	Not exclusively breastfed
Gestational Smoking	
Gestational Alcohol	

Overall Results

Cultural Type	Odds Ratio
Separator (↑Pacific ↓NZ)	1.00
Integrator (↑Pacific ↑NZ)	1.53
Marginal (↓Pacific ↓NZ)	1.84
Assimilator (↓Pacific ↑NZ)	2.03

Overall finding

- Strong alignment to Pacific culture =
Positive effect on Maternal and Infant health outcomes
- Separator – Best outcomes
- Integrator – Reasonable
- Marginal & Assimilator – Poor

Acculturation & Smoking

- Smoking amongst Pacific fathers
- 40% prevalence rate amongst cohort
- Separators – lower prevalence rate
- Assimilators – highest prevalence rate

Key Messages

- Acculturation = important influence in health outcomes
- Pacific/traditional culture = positive effect
- Need further investigation this concept – strengthen cultural identity/utilise culture in our services

Acknowledgements

Burrows J, Williams, M, Schluter, P, Paterson, J, Langitoto Helu, S.

Pacific Islands Families Study: The association of Infant Health risk indicators and acculturation of Pacific Island mothers living in New Zealand. Journal of Cross-Cultural Psychology. In press.



Pacific Islands Families Study Website

<http://www.aut.ac.nz/pif>



AUT University



Health Research Council of New Zealand



Foundation for Research Science & Technology



Maurice & Phyllis Paykel Trust